

20 Years of Celebrating Our Heritage!

TOWN TOURS & VILLAGE WALKS

announces the 20th summer of sharing Chester County's rich heritage Network, and the Chester County Conference and Visitors Bureau Westtown Township, the Chester County Historic Preservation Commission, the Chester County Historical Society, and the Chester County Board of Commissioners through the Chester County Planning Commission, the Chester County Historical Society, and the Chester County Conference and Visitors Bureau.

Town Tours & Village Walks is a series of free summer strolls through historic neighborhoods, hamlets, villages and sites. This summer, you can explore Chester County's heritage on Thursday evenings, June 12 - August 21. Tours begin at 5:30 pm and generally last one hour. The last tour leaves at 7:00 pm unless daylight allows for additional tours. Each tour is sponsored and designed by our municipal historical commissions and organizations to inform, entertain and increase awareness of Chester County's rich heritage and historic landscape. A number of our sites offer a good selection of restaurants and shops to enjoy after your tour.

This summer, you will tour the southwest quadrant of West Chester's Historic District, East Pikeland's historic bridges, the Battle of the Clouds at Historic Yellow Springs, the history of the Phoenix Iron Company, the historic villages of Birchrunville, Ficks Locks, Romanville, and Nantmeal Village and the historic districts of Malvern and Oxford Borough. Historic fare tastings, special living history presentations, and three brand new tour sites are all features of this summer's program.

Last year, over 2,000 Chester County citizens and visitors enthusiastically endorsed the assortment of historic evening walking tours! The program is endorsed by Preservation Pennsylvania and the Pennsylvania Historical and Museum Commission.

IMPORTANT: For everyone who has enjoyed past tours, we remind you there will be no preregistration after the first tour in West Chester. The one **EXCEPTION** is tour #8, Malvern Borough. See brochure for details. Also, please remember for popular tours there can be a wait of up to 15 minutes.

WEATHER UPDATES: For information and weather updates, refer to www.chesco.org/planning or contact Karen Marshall, Heritage Preservation Coordinator, at 610-344-6923 or kmarshall@chesco.org.

Town Tours & Village Walks

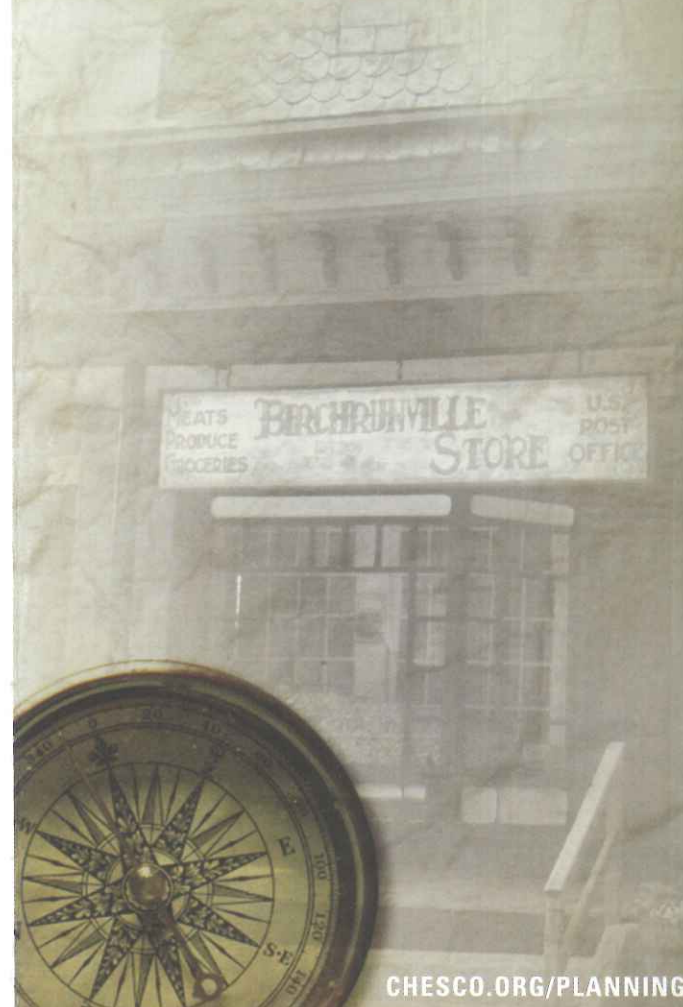
SUMMER 2014

Town Tours & Village Walks

SUMMER 2014

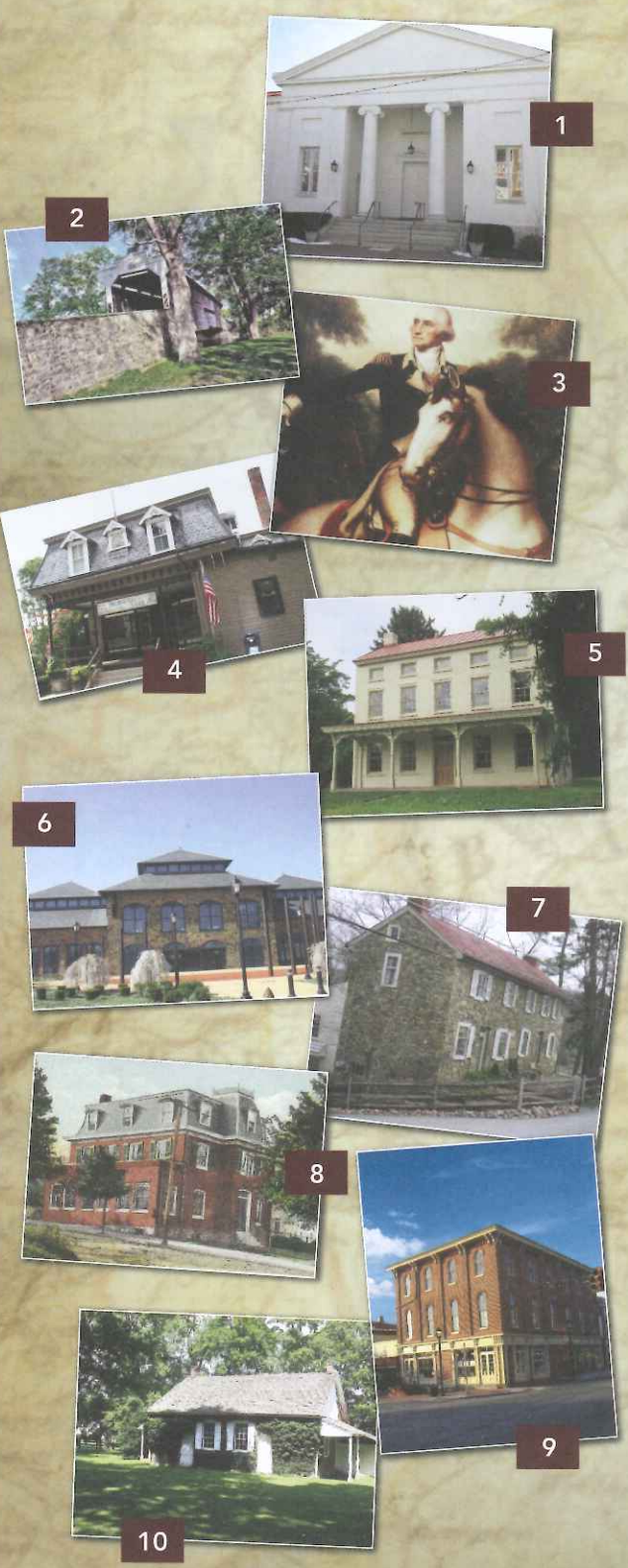
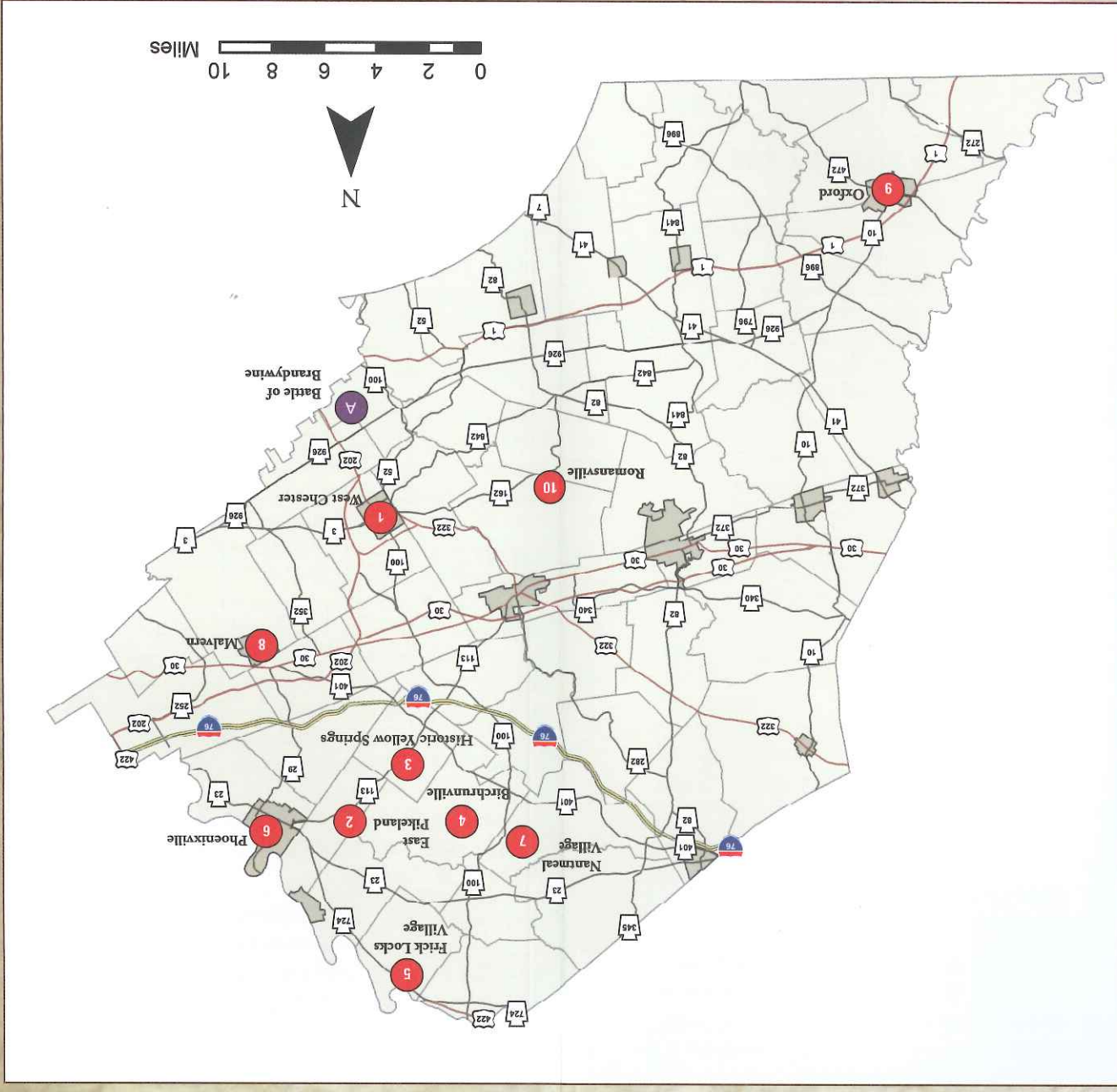
• FREE TOURS •

Join Us for Chester County
Summer Strolls Through History
20th Year



Sponsored by

Chester County Board of Commissioners
& Visitors Bureau
www.BrandywineValley.com
www.cchpn.org
www.chestercountyhistorical.org



Summer 2014
Town Tours and Village Walks

Sponsored by
Chester County Board of Commissioners
Chester County Conference
& Visitors Bureau
Chester County
Historic Preservation Network
The Chester County Historical Society
Chester County Planning Commission
601 Westtown Road, Suite 270
West Chester, PA 19380-0990
www.chesco.org/planning

CHESCO.ORG/PLANNING

Summer 2014

Town Tours and Village Walks

June 12 ①

KICK-OFF CELEBRATION AND SOUTHWEST QUADRANT TOUR

SPONSOR: WEST CHESTER HARB

PARKING AND INFORMATION: Tours and Program at the First Presbyterian Church of West Chester, 130 W. Miner St., West Chester. Metered street parking and at 220 W. Market Street Transportation Center garage across from the Justice Center.

Join us for the annual Town Tours & Village Walks kick-off celebration at the First Presbyterian Church of West Chester for greetings from the Chester County Historical Society, the Borough, and the County. You will next join your tour guide to explore the Southwest quadrant of West Chester Borough. This sector includes part of the town center, with its historic buildings and tree-lined streets of residences in the various styles of the 19th century. Each individual group tour is a specially designed and written tour with its own focus and itinerary. Registration for the tours and entertainment by the Lukens Band begins at 5:30 pm at the church.

June 19 ②

BRIDGING HISTORY IN EAST PIKELAND

SPONSORS: Pikeland Historical Society & East Pikeland Historical Commission

PARKING AND INFORMATION: East Pikeland Elementary School located at the intersection of Hares Hill Road and West Seven Stars Road.

Join us for our annual historic walking tour! This year volunteers will lead you on a tour of historic structures, bookended by two historic bridges on the scenic French Creek - the Kennedy Covered Bridge and the Hares Hill Iron Bridge. Midway tour stops will be at the Prizer's Mill Complex; East Pikeland Elementary School, the first consolidated school in East Pikeland; and the Histan Farmstead and railroad stop (circa 1800), which serves as an example of the evolution of architecture over more than 100 years.

June 26 ③

REDCOATS AND RAINCOATS!

SPONSOR: Historic Yellow Springs, Inc.

PARKING AND INFORMATION: 1685 Art School Road, Chester Springs; signs will direct you to two parking lots and registration; handicap accessibility limited.

On September 16, 1777, 26,000 Continental and British Troops faced each other in the Malvern area when torrential rain poured down upon them. This Battle of the Clouds forced General George Washington to retreat and march the night across the Great Valley to camp in the fields at Yellow Springs. Learn all about this battle when the Revolution came to Chester Springs. Visit where General Washington set up his headquarters that night and later established the first military hospital in America.

July 10 ④

BIRCHRUNVILLE: MILLS AND MECHANICS

SPONSOR: West Vincent Historic Resources Committee of the EAC

PARKING AND INFORMATION: Field parking will be off Flowing Springs Rd. behind the Birchrunville Cafe. If heavy rainfall, please contact the WV Township office at 610-458-1601 for alternate parking site. Please note: parts of the tour involve very steep/difficult terrain.

Nestled in "the hollow" of the Nantmeal Hills, Birchrunville began in the early 18th century when Morris Evans, a Welsh farmer, built his small stone cottage on a hillside near the northern boundary of the current National Register Historic District. His sheep grazed in the meadow below, along the banks of the Birch Run. The stream's water power led to the construction of several mills, and (along with an early 19th century "subdivision") drew tradesmen, storekeepers, and other entrepreneurs. The village continued its growth through the mid 1800s, adding a hotel, a larger schoolhouse, and a classical Greek Revival style house in the meadow. The third General Store, built in 1898, added Victorian details to the more common village architecture. Come and step back in time to a unique microcosm of a 19th century rural village in northern Chester County.

July 17 ⑤

FRICKS LOCKS: THE VILLAGE A CANAL BUILT

SPONSORS: East Coventry Historical Commission and Exelon Generation

PARKING AND INFORMATION: Directions - Take Rt. 422 to Rt. 724 (Phoenixville Exit), turn left at end of ramp and follow Rt. 724 for 1.10th mile, turn left on Fricks Lock Road, follow through stop sign for a total of 0.85 mile. Signage and Volunteers will direct you to parking once you reach the site.

Fricks Locks Village began as a family farm in 1734 when Johann 'Hans' Grumbacker, a Swiss immigrant and Anabaptist, purchased land on the banks of the Schuylkill River. His son Peter Grumbacker built his house on the land he farmed sometime between 1753 and 1757. Fifteen year old Catherine Grumbacker married John Frick, giving the village its eventual name. When the Schuylkill Navigation Company built 'the locks' on the farm property in the early 19th century, a small, bustling commercial village developed supported by the commerce from the canal traffic. Later, residential properties developed to house those who worked on the canal or worked for supporting businesses. Enjoy the evolution of Fricks Locks Village from a small farming community to a flourishing village.

July 24 ⑥

"AT PHOENIX - IT'S THE PEOPLE THAT MAKE THE DIFFERENCE"

SPONSORS: Schuylkill River Heritage Center & the Historical Society of the Phoenixville Area

PARKING AND INFORMATION: FREE parking is available at the Schuylkill River Heritage Center Parking Lot at the Foundry Building, 2 Main Street, Phoenixville.

The sign that once welcomed people to the Phoenix Iron and Steel Company site symbolizes the company's approach to hiring everyone who came to the town to find a job no matter their race, religion or ethnicity. This summer's tour will begin at the Schuylkill River Heritage Center at the Foundry Building. Visitors will be introduced to the community's history here. They will then visit a part of the Schuylkill River Trail and unique architectural treasures in Phoenixville's Historic District that will help them to appreciate how this philosophy has become part of Phoenixville's DNA. Mutual respect, support and inclusiveness are a reflection of the Borough's cultural diversity and an important part of its Renaissance.

July 31 ⑦

NANTMEAL VILLAGE: THE "SWEET WATER" MEETING ON COVENTRY ROAD

SPONSORS: East Nantmeal Historical Commission and Society

PARKING AND INFORMATION: Camphill Soltane, 224 Nantmeal Road, Glenmoore.

Stroll through Nantmeal Village, Welsh for "sweet water." Our village began as a "quiet" Quaker settlement in the early 1700's, convenient to nearby forges. When the meeting closed in strife, the village was reborn through the "wheelings and dealings" of John Murray and others. By the 1880's, it became quite the destination with a church, two schools, band hall, store, smithy, wheelwright, cabinetmaker and more! This now sleepy residential hamlet hides a colorful past illuminated for you on the Town Tours!

August 7 ⑧

MALVERN BOROUGH, 125 YEARS OF HISTORY BY TROLLEY!

SPONSORS: Malvern Historical Commission & Paoli Battlefield Preservation Fund

PARKING: First Baptist Church of Malvern, 146 Channing Avenue and overflow parking at St. Patrick's Catholic Church, 104 Channing Avenue. Handicap and library parking only in the Borough Hall lot.

TROLLEY RESERVATIONS RECOMMENDED: Trolley Tours will depart every 20 minutes from the Borough Hall beginning at 4:30. Please call 610-644-2602 to reserve your trolley time. Waits without a reservation could exceed one hour.

Extensive development of a small village in the northern part of Willistown Township in the 1880's led to its residents desire to separate from the township and govern themselves. On a warm summer day in 1889, the Borough of Malvern was officially incorporated on August 13th. Come ride a trolley through the streets of Malvern Borough, returning you 125 years in the past to learn what the town was like at its incorporation. Hear about businesses and community organizations that have roots older than the Borough. See buildings that were built more than 125 years ago and learn about the Battle of Paoli and the efforts to maintain the memorial grounds. Following the tour, stop in to visit the History Center to view artifacts and talk with members of the Malvern Historical Commission.

August 14 ⑨

OXFORD HISTORIC DISTRICT TOUR & TASTE

SPONSORS: Oxford Area Historical Association (OAHA) and Oxford Mainstreet, Inc. (OMI)

PARKING AND INFORMATION: Follow signs to check in on the corner of Locust and Third Street, in Oxford or view our parking map at http://downtownoxfordpa.org/parking_oxford_pa.html.

In the early 1700's the Scotch-Irish had settled in Oxford along an old Nanticoke Indian trail that led to the Chesapeake Bay. By 1754, there was a community formed around Hood's Tavern and the Presbyterian Church. But the great growth came with the arrival of the railroad in 1860. Experience the early Victorian architecture of Downtown Oxford and meet men and women in period clothing who were responsible for the founding of Lincoln University, starting the 2nd oldest library in the state (1784) and having their own newspaper, bank, water company, fire company and electric company by the end of the 19th century. Included in the tour are the snack flavors of Oxford with tastes from yesterday and today.

August 21 ⑩

ROMANSVILLE: JOHN ROMANS AND HIS VILLAGE

SPONSOR: West Bradford Historical Commission

PARKING AND INFORMATION: Romansville Meetinghouse, 1890 Shadyside Road, Coatesville.

Most travelers who pass through Romansville have no idea of the historic value of this small village. Our village, though quiet in appearance, had many trades such as a plumber, carpenters, a tinsmith, small stores, a lead pipe shop, a blacksmith who made carriages and sleighs, a cabinetmaker, and three inns. The Romansville Methodist Church, said to have been the first land in Chester County owned by the Methodist faith, and Romansville Quaker Meetinghouse, almost 165 years old, are featured on the tour.

LIGHT REFRESHMENTS ARE SERVED AT ALL LOCATIONS!

Don't Miss!

On Hallowed Ground: The Battle of Brandywine 2014, May 17 and 18

Presented by Birmingham Township to benefit The Wounded Warrior Project and Birmingham Battlefields Preservation. Experience a live reenactment on one of the most important battle sites of the Battle of Brandywine which took place on September 11, 1777 when 26,000 men and Generals Washington and Howe met in battle in Chester and Delaware Counties.

For more information: www.brandywine2014.com.